



***CUSTOM CATALOG***

**BIO RACER**  
SPEEDWEAR



***DEAR CYCLING ENTHUSIAST,***

Welcome to our custom catalog containing all the information on Bioracer's custom cycling apparel. Our intention is to clearly display our assortment and introduce you to our company.

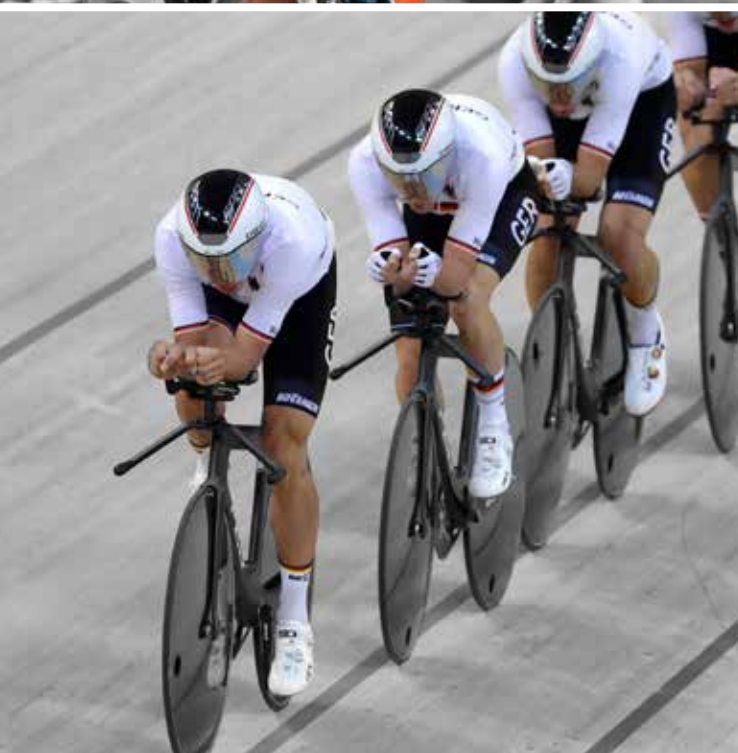
In the first part, you will find more information about our DNA and the science of speed. Thereafter, you will discover all our customizable articles. They are arranged by product line (Epic, Icon, accessories, etc.) and moment of use (hot weather, mixed weather, cold weather, etc.).

The symbols indicate whether the products are available for: ♂ ♀ ☺

For size charts and the pad selector, please consult the end of the catalog. There, you can read more not only about the design, production, and order process, but also about our responsibility as a company.

If you have any questions, please consult the frequently asked questions and/or contact your local sales representative.

Enjoy reading and exploring!



# CONTENTS

**OUR DNA** 6

**SCIENCE OF SPEED** 12

**CUSTOM CYCLING APPAREL** 30

**EPIC** 34

WARM WEATHER 44

MIXED WEATHER 48

COLD WEATHER 50

RACE DAY 54

CYCLO-CROSS 64

**ICON** 74

WARM WEATHER 82

MIXED WEATHER 86

COLD WEATHER 88

RACE DAY 92

CYCLO-CROSS 96

**ACCESSORIES** 110

**OFF-BIKE** 124

**NON-CUSTOM ACCESSORIES** 126

**SIZE GUIDE & PAD SELECTOR** 134

**DESIGN, PRODUCTION & ORDER PROCESS** 140

**RESPONSIBLE COMPANY** 148

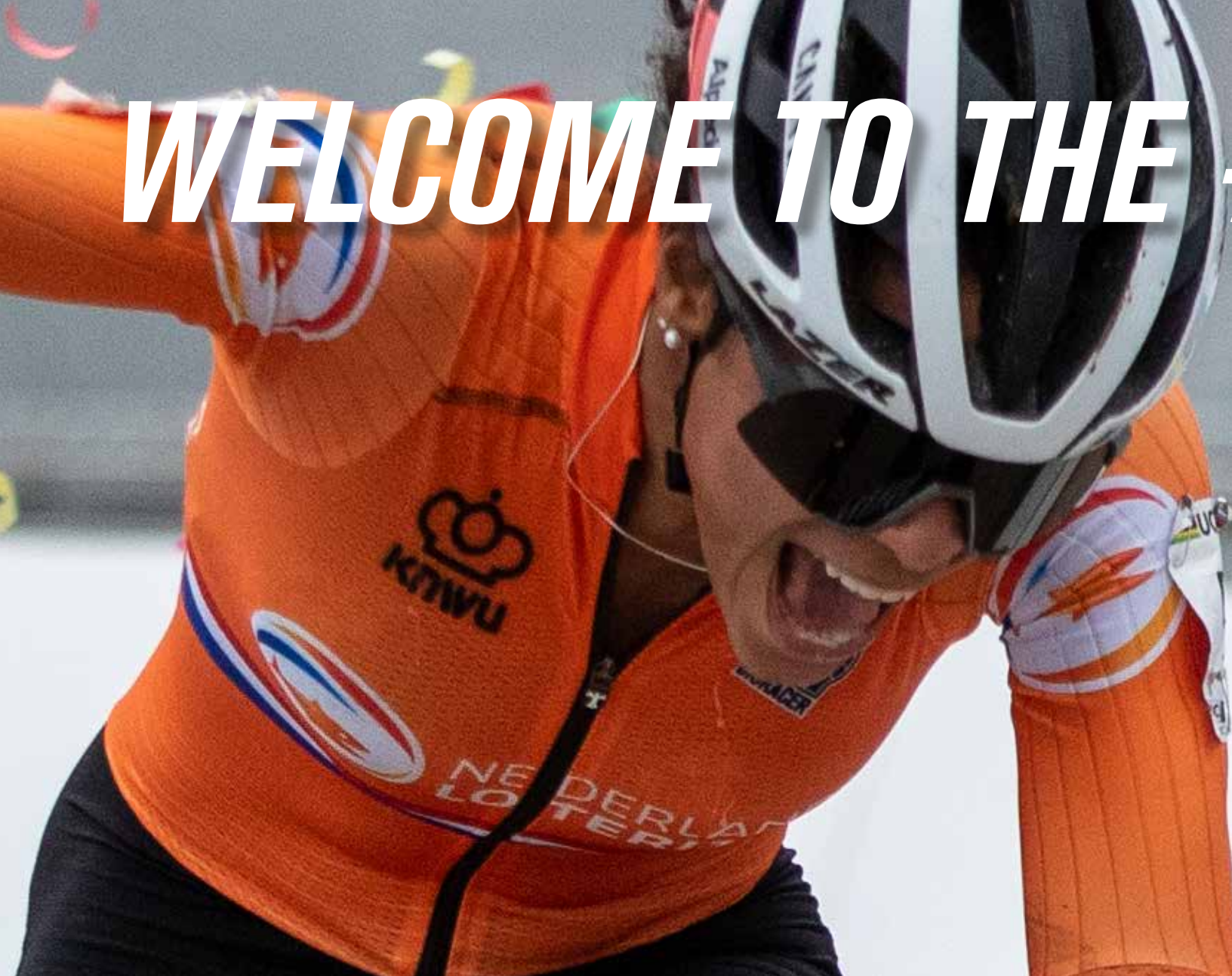
**FREQUENTLY ASKED QUESTIONS** 152



PROUD PARTNER OF



# WELCOME TO THE #BIORACERFAMILY



# ***OUR DNA***

# OUR STORY

In 1986, Raymond Vanstraelen founded Bioracer with a clear purpose to measure and study the athlete in motion in order to optimize cycling performance.

While our business has grown from Raymond's home to factories, research facilities and offices on three continents, our mission remains steadfast and signifies the meaning of our name and the heart of our promise to make you faster.

We are a company of riders and racers, designers and innovators, craftspeople and seamstresses. We engineer apparel and test it in our Protolab for its ability to battle cold and regulate heat.

We analyze the cyclist in motion to ensure fabric, design and construction deliver anatomic fit with optimal comfort. We monitor wind-tunnel data and real-world racing to discover new ways to cheat the wind.

But mostly, we find truth on the climbs, in the mud, in the crosswinds, over the cobbles and in every meter of riding from the start line to the finish line. Learning from thousands of racers and races; thousands of medals and podiums, and thousands of clubs, Olympic and World Championship races.

With over a hundred years of Belgium cycling history woven into every stitch and every pattern, it is our mission and honor to make you faster. And bring the same performance products worn by the best athletes in the world to every cyclist, every day.





*WELCOME TO THE PROVING GROUNDS.*

*IN BELGIUM IT RAINS 200 DAYS A YEAR.  
IT'S COLD.*

*IT'S MUDDY.*

*THERE ARE COBBLESTONES  
THAT CAN RATTLE FILLINGS  
FROM YOUR MOLARS.*

*FOR TESTING CYCLING APPAREL,  
THIS IS PARADISE.*

# ***SCIENCE OF SPEED***





# *THE SCIENCE OF SPEED. THE SOUL OF BELGIAN CYCLING.*

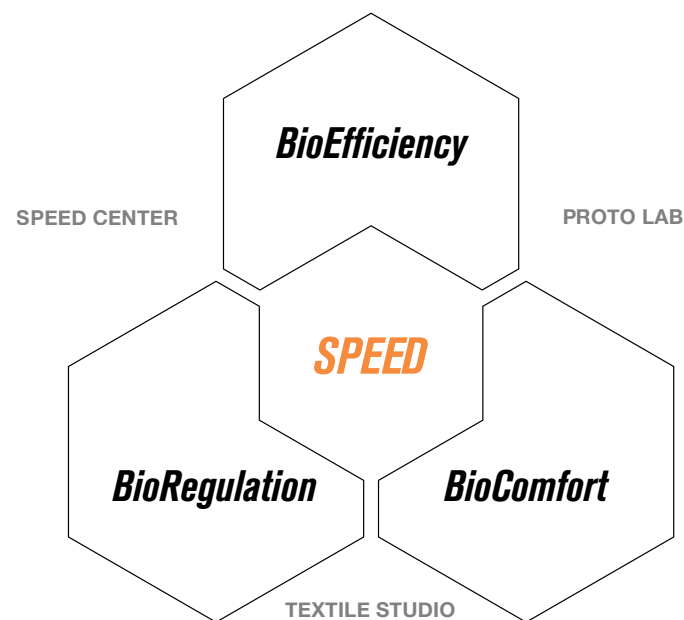
For over 30 years we have focused our efforts on the perpetual pursuit of speed. Many said our focus was too narrow but our founder Raymond Vanstraelen understood the unique benefits of our speed-centric philosophy and in making Bioracer Speedwear innovations accessible to every rider.

Speed is the summation and optimization of rider efficiency + comfort + temperature regulation or in our language BioEfficiency + BioComfort + BioRegulation. Raymond in his humble wisdom also understood that these components of speed benefit riders of every level.

To drive perpetual innovation in these three areas, Raymond and his team have created three centers for advanced innovation — the Bioracer Speed Center, the Bioracer Protolab and the Bioracer Textile Studio. In addition, Bioracer partners with the most demanding Belgian, Dutch and German federation riders racing for glory at the European, World and Olympic Championship levels. Having to perform for the most demanding professionals ensures we also deliver excellence for the most important people, our customers.

We understand the science of speed.  
And we understand that fast enough is never enough.

# THE SCIENCE OF *SPEED*



In our **Speed Center**, we conduct cycling's most advanced ergonomic and aerodynamic rider research and analysis. This allows us to perpetually improve rider fit, textile performance, and garment construction, which enhance rider efficiency.

In our **Protolab**, we engineer constant innovation through research and creation of performance patterning, fit, and construction. To this end, the Protolab works closely together with our Speed Center and Textile Studio. After the development stage, our future-forward cycling speedwear is manufactured in our own Bioracer factories.

In our **Textile Studio**, we elevate the performance of all riders through fabric technology innovations. They enhance rider aerodynamic efficiency with ergonomic support, performance comfort with muscular support, and heat regulation with weather protection.



*SPEED IS ALL ABOUT EFFICIENCY:*

***WE GO THE EXTRA MILE  
TO MAKE YOU FASTER***



# ***DYNAMIC CYCLING ANALYSIS - BioEfficiency***

The cyclist's position on the bicycle decides whether he wins or loses. He may ride the best bike and wear the most aerodynamic race apparel, without the right position he is nowhere. This is because only the perfect cycling movement allows maximum performance and minimizes the risk of overuse injuries.

Cycling efficiency is all about stability and symmetry. Every asymmetrical movement pattern will lead to friction in the body and hence to injury after a certain period. When cycling asymmetrically, it is not the question if an injury will develop but when it will arise. An optimal position however will lead to improved oxygen uptake, maximal power transmission, better aerodynamics, and enhanced comfort on the bike. This will result in improved performance.

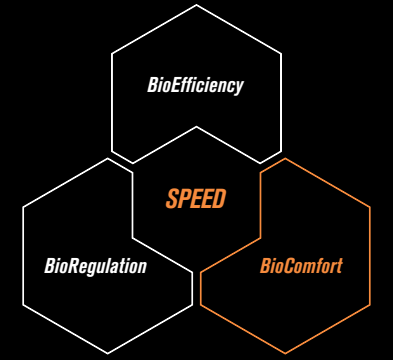
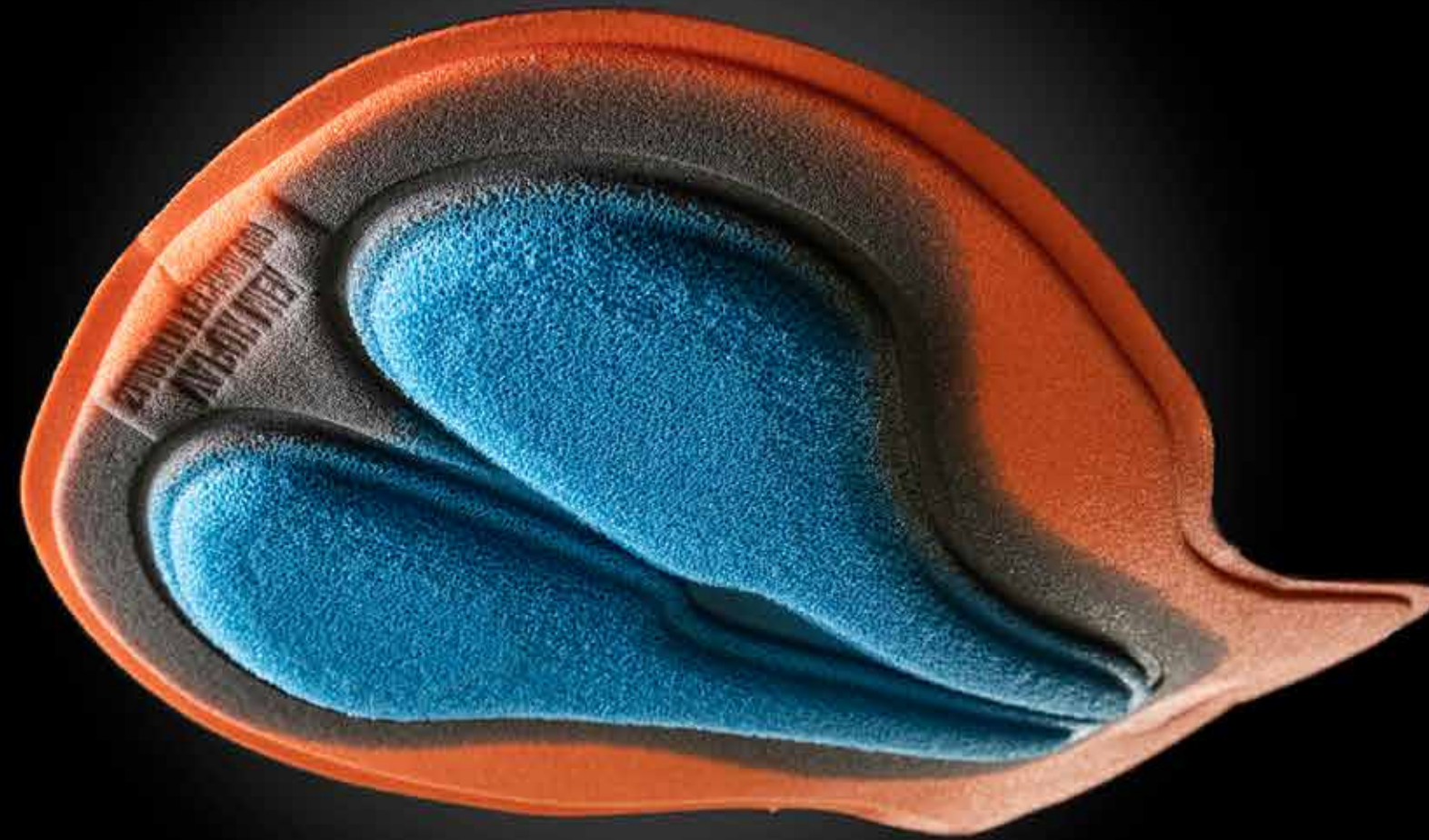
There is also something else to consider. As the speed increases, the air resistance becomes more important. By riding in an aerodynamic position, the rider can reduce the drag that costs him an inconceivable amount of energy and save some valuable watts. Even slow riders can enjoy the benefits. To get to the bottom of which position on your bike is the fastest and to continuously improve our race apparel, we run tests in the wind tunnel.

At Bioracer, we are convinced that man is the measure of all things. Our founder Raymond Vanstraelen is one of the most experienced bike fitters in the world. He helped over 10.000 professional and amateur cyclists to improve their biomechanical and aerodynamic position on the bike. Next to adaptation on the bike, he also made customized heat-molded insoles to improve the rider's stability and symmetry during cycling. Their results confirmed the improvement. Nowadays, we still specialize in (aero)dynamics cycling analysis. The only difference is that we are now using the latest technologies.

As every individual body is different, the determination of the optimal cycling position is a highly individualized process.

**You can find more information and book an appointment on [bioracermotion.com](http://bioracermotion.com).**





*THE UPSIDE DOWN SCIENCE OF CHAMOIS PAD DESIGN:*

# ***WHAT THE COBBLED BERGS OF FLANDERS HAVE TAUGHT US ABOUT COMFORT.***

The climbs of the Flanders region in Belgium are mythical in the cycling world. They are known for their variety of shapes and surfaces, for their difficulty, for their lack of comfort. To ride efficiently, avoiding falling or punctures, the riders use their special skills combined with specific materials. We all know that the most demanding conditions require the best materials. In our gender-specific chamois pads, the flat side is strategically placed next to the body. In this way, it molds to you while the dimensional pad side absorbs vibration, cushioning you from the bone-rattling pave of Flanders, and beyond. Even if you don't ride on cobblestones, you can gain from our pad technology.

# OUR PAD TECHNOLOGY - BioComfort



**REGULAR FOAM**

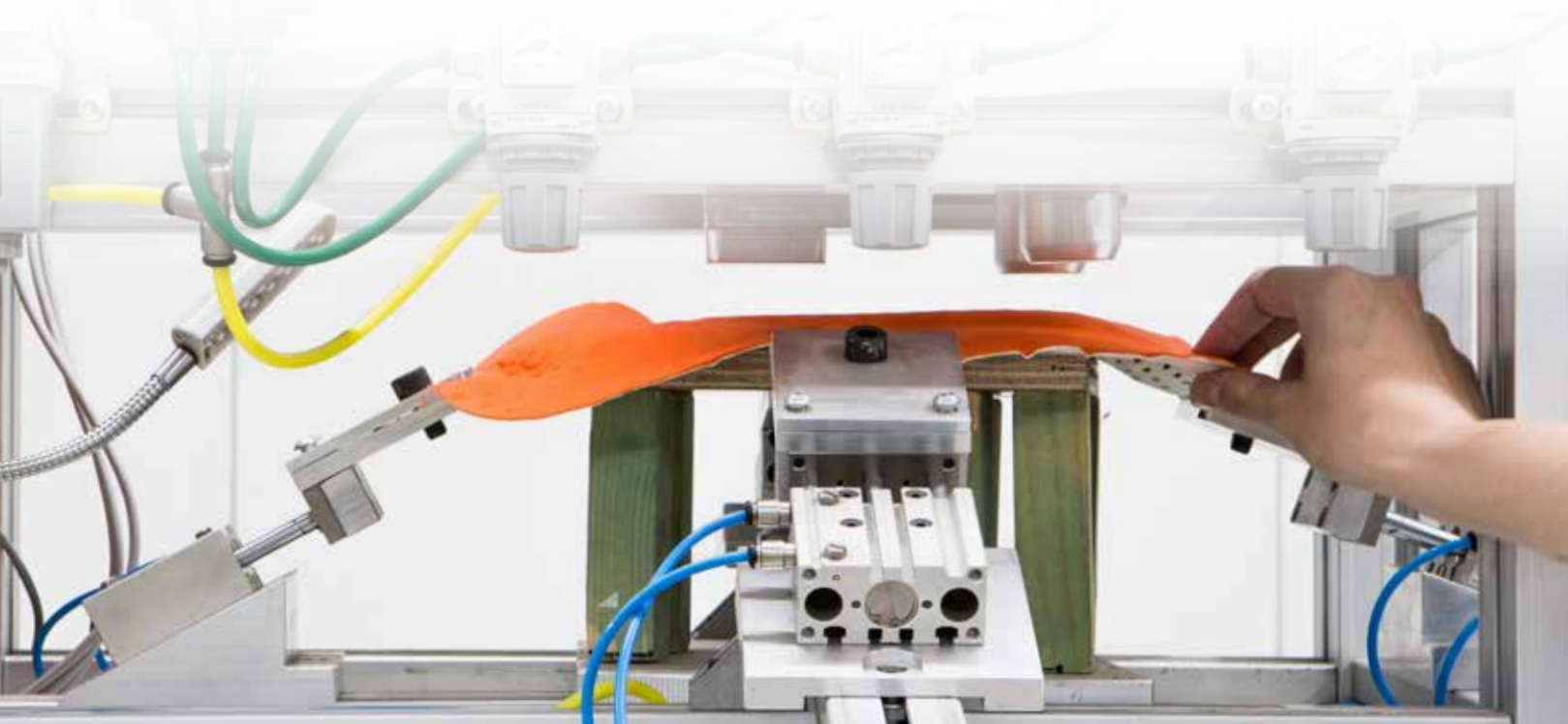
Made of a simple but dense foam layer for better damping, a regular foam obstructs the free air stream. As a result, it is not breathable and therefore slow drying. It can also become heavy. This means more chance of saddle soreness.



**EVAPOR FOAM**

Our multi density foam construction provides optimal support and comfort. The open 3D webbing allows a free air stream which makes the cycling pad breathable, light, and fast drying. This means enhanced moisture management and better skin protection. Furthermore, the rubber-like behavior of the foam allows high density impact protection while riding.

We use this technology in our Vapor and Wave chamois pads.



# VAPOR



The Vapor pad offers comfortable damping. Support and perforations in the right places ensure breathability and optimal moisture management.

- SOFT TOUCH MICROFIBER
- ANTIBACTERIAL
- HIGH DENSITY IMPACT PROTECTION
- OPTIMAL BREATHABILITY
- ENHANCED MOISTURE MANAGEMENT

# WAVE



Anatomically designed, the futuristic shape of the Wave pad follows the contours of your body. The benefits? Better pressure distribution, less friction, and more stability. The Vapor 3D webbing technology offers comfortable damping, optimal breathability, and enhanced moisture management.

- ANATOMICAL PREFORMED SHAPE
- SOFT TOUCH MICROFIBER
- ANTIBACTERIAL
- OPTIMAL BREATHABILITY
- HIGH DENSITY IMPACT PROTECTION
- ENHANCED MOISTURE MANAGEMENT
- PRESSURE RELIEF ON SOFT TISSUE FOR IMPROVED BLOOD FLOW

## TEMPEST FABRICS

# WE BATTLE THE WET, THE WIND AND THE COLD – SO RIDERS CAN BATTLE THE COMPETITION

Our Tempest fabrics were engineered in our Protolab to deliver rider efficiency, comfort and supreme temperature regulation in the harshest training and racing conditions.

It might be quite fashionable to train indoors when the sun disappears behind the clouds, but our riders revere the cold, wet and rainy days. If you expect to win in all conditions, you must train in all of them. Our water-repellent and insulating Tempest fabrics are constructed specifically for braving inclement weather with your bike. So, they are warm, light, and supremely breathable,



# OUR INNOVATIVE FABRICS - BioRegulation

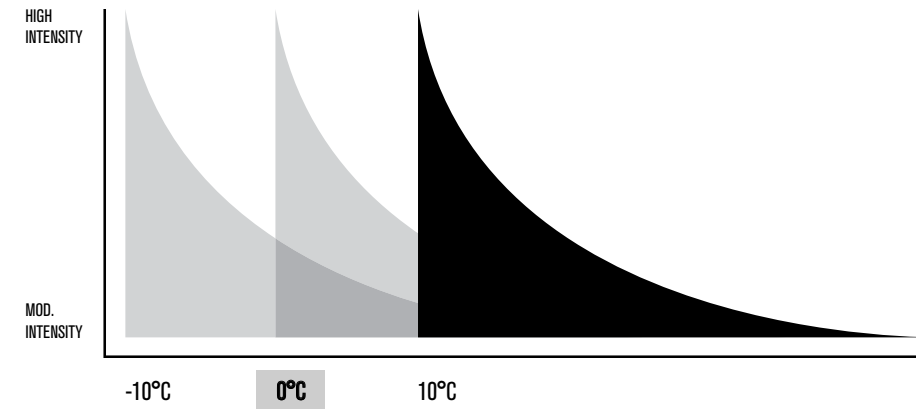
## TEMPEST LIGHT



Offering the perfect mix of light insulation and high breathability, our lightest Tempest material is the ideal temperature regulator and stabilizer in mixed weather conditions. The durable water repellency manufactured into the fabric will always keep its protection, even after many washings.

- LIGHT
- BREATHABLE
- INSULATING
- DURABLE WATER REPELLENT

## TEMPERATURE/INTENSITY RANGE



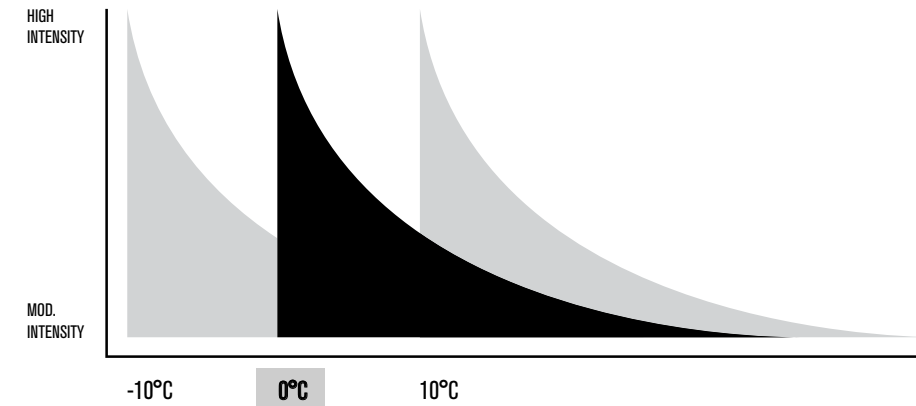
## TEMPEST



Insulating and breathable, our Tempest material is the ideal temperature regulator and stabilizer in cold weather conditions. The durable water repellency manufactured into the fabric will always keep its protection, even after many washings.

- BREATHABLE
- INSULATING
- DURABLE WATER REPELLENT

## TEMPERATURE/INTENSITY RANGE



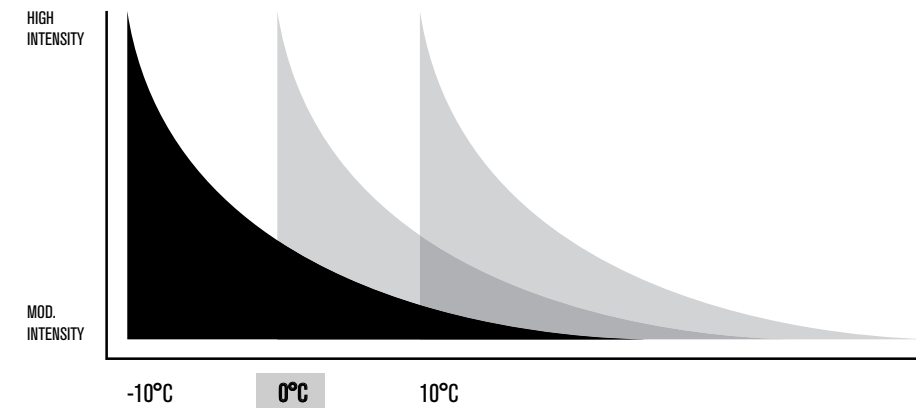
## TEMPEST PROTECT



Highly insulating and still breathable, our Tempest Protect material is the ideal temperature regulator and stabilizer in ice-cold weather conditions. The durable water repellency and wind protection manufactured into the fabric will always retain, even after many washings.

- WIND BLOCKING
- BREATHABLE
- HIGHLY INSULATING
- DURABLE WATER REPELLENT

## TEMPERATURE/INTENSITY RANGE





***CUSTOM CYCLING  
APPAREL***

## OUR PRODUCT LINES

### EPIC

#### RACE POSITION FIT

The Epic line is all about performance. The bioadaptive fabrics combined with a race position fit ensure optimal aerodynamics. The high-end finish adds a unique fast look.

This apparel is ideal for speed addicts, men and women who want to take their performance to the next level.



### ICON

#### CLASSIC BODY FIT

The Icon line ensures ultimate comfort while keeping performance in mind. The classic body fit provides an extra relaxed feel.

This apparel is ideal for cyclotourists and people who enjoy smooth rides. Men, women, and kids pedal in style with Icon.





# **EPIC**

## ***THE PINNACLE OF SPEEDWEAR TECHNOLOGY***

The Epic line establishes a new zenith for on-the-bike race performance and off-the-bike comfort. Bioadaptive fabrics combined with an optimized race position fit ensure optimal aerodynamics while riding and racing. The apparel is available for men, and women; all with a slightly different gender-specific cut.

Developed and designed together with pros, the Epic line is an excellent choice for epic races and fast rides. The latest technologies, best materials and high-end finish allow you to perform better and look faster on the bike.

Besides performance, the Epic line offers comfort and makes your team stand out. You can customize your cycling kit with sponsor logos, club or company colors and more.

Ready to discover all the Epic products? Go!

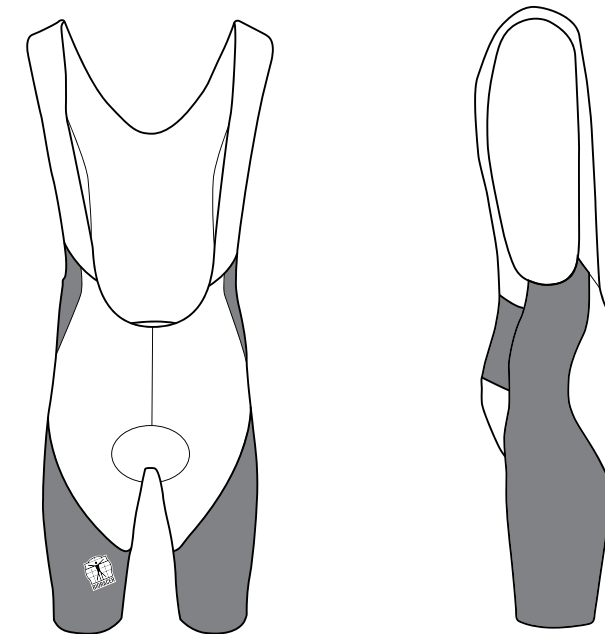


# DESIGN POSSIBILITIES

## PRINT OPTIONS JERSEY



## PRINT OPTIONS BIBSHORTS



- Customizable area
- Fabric base color: Black / Navy / Safiro / Red

**EPIC**

**EPIC**  
THE PINNACLE OF  
SPEEDWEAR TECHNOLOGY



**EPIC KIT:  
NEXT LEVEL NOW  
HAS A NEXT LEVEL**

There is an Epic kit for every weather system. From spring training to fall classics. From hot summer race days to ice-cold winter rides, we've got you covered.

On the next page, you will discover our standard kits with everything you need for your warm, mixed and cold weather rides. Off course, you can also mix and match the Epic items to assemble your own kit.



**WARM  
WEATHER SYSTEM**

51390 Epic Jersey  
52122 Epic Bibshorts

50024 Technical Summer Cap  
59098 One Summer Gloves  
59080 Technical Socks



**MIXED  
WEATHER SYSTEM**

51482 Epic Tempest Light Jacket  
51951 Epic Wind Gilet  
52122 Epic Bibshorts

50020 Technical Mid-Season Cap  
59191 Stratos Long Finger Gloves  
59350 Technical Mid-Season Arm Warmers  
59401 Lycra Mid-Season Leg warmers  
59105 Classic Socks  
59709 Tempest Protect Mid Season  
Shoe Covers



**COLD  
WEATHER SYSTEM**

51551 Epic Tempest Protect Jacket  
53570 Epic Tempest Bibtights

83397 Tempest Winter Hat  
59610 Winter Bandido  
59093 Tempest Protect Winter Gloves  
59066 Tempest Winter Socks  
59710 Tempest Full Protect Winter  
Shoe Covers



## SIZING: THE MEASURE OF GREAT PERFORMANCE

A perfect fit is critical to comfort and performance for every type of rider. Bioracer offers an extensive range of sizes across our product lines to ensure that all our cycling apparel delivers the best possible rider experience.

Whether supplying the next champion or outfitting a fundraising event, our attention to anatomic differences makes the difference in performance and comfort, on and off the bike.

Therefore, our Epic jerseys, bibshorts and aerosuits are available in a Standard and a Tall version\* to ensure an ideal fit for every rider's body type.



# WARM WEATHER

Cycling apparel engineered to keep you cool and comfortable during all your summer rides. The ideal companion for warm and hot weather conditions.

## EPIC JERSEY

♂ 51390  
♀ 51930D

- Perforated side panels
- Gradual compression sleeves
- Integrated arm grippers
- Powerband
- 3 extra deep open back pockets



## EPIC GOLDBLACK JERSEY

♂ 41320  
♀ 41320D

- UV-protective fabric
- Dry feel technology
- Integrated arm grippers
- Gradual compression sleeves
- 3 extra deep open back pockets



## EPIC BREEZE JERSEY

♂ 41324  
♀ 41324D

- Mesh front and back panels, and perforated side panels
- Gradual compression sleeves
- Integrated arm grippers
- Powerband
- 3 extra deep open back pockets





# WARM WEATHER

Cycling apparel engineered to keep you cool and comfortable during all your summer rides. The ideal companion for warm and hot weather conditions.



## **EPIC WOMEN'S BIBSHORTS**

♀ 52122W

- Gradual compression
- Minimal seam construction
- BibZip: to make toilet stops easier
- Integrated leg grippers
- Wave pad recommended



## **EPIC BIBSHORTS**

♂ 52122

- Gradual compression
- Minimal seam construction
- Mesh bibs
- Integrated leg grippers
- Wave pad recommended



## **EPIC WOMEN'S SHORTS**

♀ 51832W

- Gradual compression
- Minimal seam construction
- Wide elastic waistband
- Integrated leg grippers
- Wave pad recommended

# MIXED WEATHER

Versatile cycling apparel engineered to keep you comfortable during all for all your mid-season rides. The ideal companion for uncertain or cool weather conditions.



## EPIC WIND GILET

♂ 51951  
♀ 51951D

- Wind-blocking front panel
- Mesh back panel
- Packable (in back pocket)
- Silicone gripper
- 2 pockets (1 zipped)



## EPIC RAIN JACKET

♂ 51552  
♀ 51552D

- Taped seams
- Beavertail
- Packable (pocket inside)
- Silicone gripper
- 2-way zipper



## EPIC TEMPEST LIGHT JACKET

♂ 51482  
♀ 51482D

- Insulating
- Durable water repellent
- Minimalistic cuffs
- Silicone gripper

# COLD WEATHER

Cycling apparel engineered to brave the cold, wind and rain. Developed without compromise. The ideal companion for all your cold and wet rides.



## EPIC TEMPEST JACKET

♂ 51480  
♀ 51480D

- Insulating and durable water repellent
- Minimalistic cuffs
- Silicone gripper
- Powerband
- 3 open back pockets



## EPIC TEMPEST PROTECT GILET

♂ 51950  
♀ 51950D

- Wind-blocking front panel
- Insulating and durable water repellent
- Soft lining
- Silicone gripper
- 2 pockets (1 zipped)



## EPIC TEMPEST PROTECT JACKET

♂ 51551  
♀ 51551D

- Wind-blocking front and upper arm panels
- Insulating and durable water repellent
- Minimalistic cuffs
- Powerband
- 3 open back pockets

# **COLD WEATHER**

Cycling apparel engineered to brave the cold, wind and rain. Developed without compromise. The ideal companion for all your cold and wet rides.



## **EPIC TEMPEST BIBTIGHTS**

♂ 53570  
♀ 53570W

- Insulating
- Durable water repellent
- Thin foot straps
- Bibzip: to make toilet stops easier (women only)
- Wave pad recommended

♂ 53572  
♀ 53572W

- + Reflective calf panels



# *RACE DAY*

## *ON THE FAST LANE FOR SUCCESS*

Race day is finally here. Time to put all your tactics into practice. You have trained well and got the condition you have strived for. After all that effort, it is logical to leave nothing to chance.

Whichever weather it is, it is important to keep your body temperature under control. By wearing the appropriate race clothing, you can save your energy for essential breakaways or sprints.

This sounds like the ideal job for our performance-driven race gear, developed to meet the standards set by pro riders in the most demanding conditions.

Off you go! Ride like it is race day!

**RACE DAY PROVEN:**

# **WE DON'T RELY ON YESTERDAY'S VICTORY TO WIN TOMORROW'S RACE.**

We continually push the edge of innovation and technology. Whether riding in the La Ronde or the Tour de Local Pub Crawl, our constant research and analysis ensures that whatever your speed is, it is enhanced by performance textiles, optimized fit and detailed finish to make your ride comfortable and efficient.

AND PROVEN. AND PROVEN. AND PROVEN. AND PROVEN. PROVEN. AND PROVEN. AND PROVEN. AND PR  
EN. AND PROVEN. AND PROVEN. AND PROVEN. AND PROVEN. AND PROVEN. AND PROVEN. AND PROVEN.  
PROVEN. AND PROVEN. AND PROVEN. AND PROVEN. AND PROVEN. AND PROVEN. AND PROVEN. AND PR  
EN. AND PROVEN. AND PROVEN. AND PROVEN. AND PROVEN. AND PROVEN. AND PROVEN. AND PROVEN.  
PROVEN. AND PROVEN. PROVEN. AND PROVEN. AND PROVEN. AND PROVEN. AND PROVEN. AND PROVEN.  
RACE PROVEN. AND PROVEN. AND PROVEN. AND PROVEN. AND PROVEN. AND PROVEN. AND PROVEN. AN  
PROVEN. AND PROVEN. AND PROVEN. AND PROVEN. AND PROVEN. AND PROVEN. AND PROVEN. AND PR  
EN. AND PROVEN. AND PROVEN. AND PROVEN. AND PROVEN. AND PROVEN. AND PROVEN. AND PROVEN.  
PROVEN. AND PROVEN. AND PROVEN. AND PROVEN. PROVEN. AND PROVEN. AND PROVEN. AND PROVEN.  
PROVEN. AND PROVEN. RACE PROVEN. AND PROVEN. AND PROVEN. AND PROVEN. AND PROVEN. AND PR  
EN. AND PROVEN. AND PROVEN. AND PROVEN. AND PROVEN. AND PROVEN. AND PROVEN. AND PROVEN.  
PROVEN. AND PROVEN. AND PROVEN. AND PROVEN. AND PROVEN. AND PROVEN. AND PROVEN. AND PR  
AND PROVEN. AND PROVEN. AND PROVEN. AND PROVEN. AND PROVEN. AND PROVEN. AND PROVEN. AND PR  
EN. AND PROVEN. AND PROVEN. AND PROVEN. AND PROVEN. AND PROVEN. AND PROVEN. AND PROVEN.  
RACE PROVEN. AND PROVEN. AND PROVEN. AND PROVEN. AND PROVEN. AND PROVEN. AND PROVEN. AN  
PROVEN. AND PROVEN. AND PROVEN. AND PROVEN. AND PROVEN. AND PROVEN. AND PROVEN. AND PR  
EN. AND PROVEN. AND PROVEN. AND PROVEN. AND PROVEN. AND PROVEN. AND PROVEN. AND PROVEN.  
PROVEN. AND PROVEN. AND PROVEN. AND PROVEN. PROVEN. AND PROVEN. AND PROVEN. AND PROVEN.  
PROVEN. AND PROVEN. RACE PROVEN. AND PROVEN. AND PROVEN. AND PROVEN. AND PROVEN. AND PR  
EN. AND PROVEN. AND PROVEN. AND PROVEN. AND PROVEN. AND PROVEN. AND PROVEN. AND PROVEN.  
PROVEN. AND PROVEN. AND PROVEN. AND PROVEN. AND PROVEN. AND PROVEN. AND PROVEN. AND PR  
AND PROVEN. AND PROVEN. AND PROVEN. RACE PROVEN. AND PROVEN. AND PROVEN. AND PROVEN. AN  
PROVEN. AND PROVEN. 1115 MEDALS SINCE 1994. AND PROVEN. AND PROVEN. AND PROVEN. AND PR  
EN. AND PROVEN. AND PROVEN. AND PROVEN. AND PROVEN. AND PROVEN. AND PROVEN. AND PROVEN.  
PROVEN. AND PROVEN. AND PROVEN. AND PROVEN. AND PROVEN. AND PROVEN. AND PROVEN. AND PR  
AND PROVEN. OLYMPIC GAMES: 15 GOLD - 17 SILVER - 14 BRONZE MEDALS. AND PROVEN. AND PROVEN.  
RACE PROVEN. AND PROVEN. AND PROVEN. AND PROVEN. AND PROVEN. AND PROVEN. AND PROVEN. AN  
PROVEN. AND PROVEN. AND PROVEN. AND PROVEN. AND PROVEN. AND PROVEN. AND PROVEN. AND PR  
AND PROVEN. AND PROVEN. AND PROVEN. AND PROVEN. AND PROVEN. AND PROVEN. AND PROVEN. PR  
EN. WORLD CHAMPIONSHIPS: 246 GOLD - 226 SILVER - 233 BRONZE MEDALS. AND PROVEN. AND PROVEN.  
AND PROVEN. AND PROVEN. RACE PROVEN. AND PROVEN. AND PROVEN. AND PROVEN. AND PROVEN. PR  
EN. EUROPEAN CHAMPIONSHIPS: 134 GOLD - 124 SILVER - 116 BRONZE MEDALS AND PROVEN. AND PROVEN.  
PROVPROVEN. AND PROVEN. AND PROVEN. AND PROVEN. AND PROVEN. AND PROVEN. AND PROVEN. AN  
PROVAND PROVEN. AND PROVEN. AND PROVEN. AND PROVEN. AND PROVEN. AND PROVEN. PROVEN. AN  
AND PROVEN. AND PROVEN. AND PROVEN. AND PROVEN. AND PROVEN. AND PROVEN. AND PROVEN. AN

# RACE DAY (SUITS)

The ultimate combination of performance and comfort.  
The ideal companion for races.



## EPIC ROAD RACE AEROSUIT

♂ 56580  
♀ 56580D

- Aerodynamic AirStripe sleeves
- Gradual compression (sleeves and legs)
- Integrated grippers
- 2 open back pockets
- Two-piece front (men only)



## EPIC TIME TRIAL AEROSUIT

♂ 56470  
♀ 56470D

- Aerodynamic AirStripe sleeves
- Short sleeves
- Gradual compression (sleeves and legs)
- Integrated grippers



## EPIC BREEZE ROAD RACE AEROSUIT

♂ 56597  
♀ 56597D

- Mesh fabric
- Aerodynamic AirStripe sleeves
- Gradual compression (sleeves and legs)
- Integrated grippers
- 2 open back pockets
- Two-piece front (men only)



## EPIC TIME TRIAL LONG SLEEVE AEROSUIT

♂ 56471  
♀ 56471D

- Aerodynamic AirStripe sleeves (upper part)
- Long sleeves
- Gradual compression (sleeves and legs)
- Integrated grippers

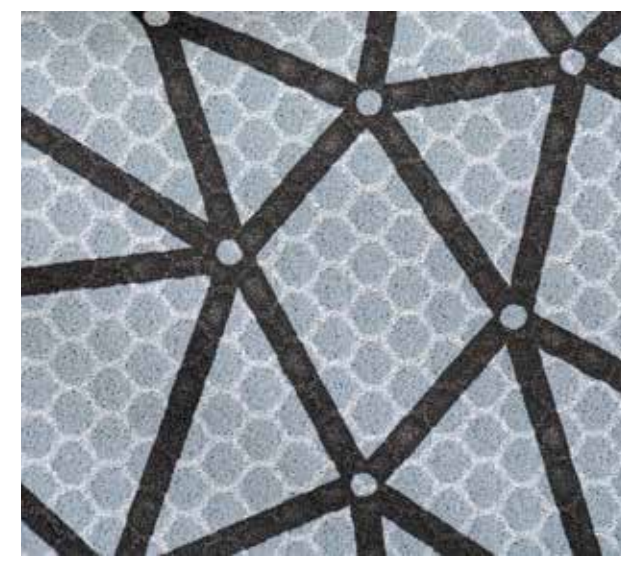


## GRAPHENE+

No matter how much preparation cyclists do, if they are not prepared for high temperatures, it can end their race. Knowledge of world importance for the Olympic Games in Tokyo.

Investing in heat management is an area that continues to grow with researchers and scientists looking at everything, from nutrition and training to equipment and kit. Bioracer and Directa Plus have teamed up to develop an innovative cooling concept, with a fabric that features Graphene technology.

Ultralight and highly conductive, graphene adds thermal management functionality to the traditional cycling apparel. It pulls heat away and dissipates it faster, therefore enabling the body to use less energy regulating body temperature. This means there is more energy conserved for making a decisive break-away.



Inside



Outside



# HOT RACE DAY

Innovative, performance-driven cycling apparel with graphene technology. The ideal companion for races in hot weather conditions.



## EPIC TOKYO GR+ JERSEY

♂ 41321  
♀ 41321D

- Body-cooling graphene technology
- Aerodynamic AirStripe sleeves with gradual compression
- Fast-drying
- Ultralight
- Mesh powerband



## EPIC TOKYO GR+ ROAD RACE AEROSUIT

♂ 56584  
♀ 56584W

- Body-cooling graphene technology
- Aerodynamic AirStripe technology with gradual compression
- Ultralight and fast drying
- Gradual compression
- Integrated grippers
- Men only: Two-piece front



## EPIC TOKYO GR+ BIBSHORTS

♂ 52124  
♀ 52124W

- Body-cooling graphene technology
- Gradual compression
- Integrated grippers
- Ultralight and fast drying
- Gradual compression



# *CYCLO-CROSS*

## *QUICK AND DIRTY THE RIGHT WAY*

Mud, sand, dust. Hills, steps, and barriers. Full focus, utmost concentration. Searing lungs, frozen toes, and sore legs. 60 minutes of suffering for one second of glory.

Success you can only achieve by riding the technical sections perfectly, putting your race tactics flawlessly into practice and picking the appropriate race clothing.

Our performance-driven cyclo-cross aerosuits have been developed to meet the standards set by pro riders in the most demanding conditions.

# CYCLO-CROSS

Cycling apparel engineered to battle the mud, grit, sand, dust, hills, steps and barriers. The ideal companion for cyclo-cross.



## **EPIC CYCLO-CROSS AEROSUIT**

♂ 56587  
♀ 56587W

- Aerodynamic AirStripe sleeves
- Water repellent
- Gradual compression (legs)
- Integrated leg grippers
- Durable



## **EPIC CYCLO-CROSS LONG SLEEVE AEROSUIT**

♂ 56681  
♀ 56681W

- Aerodynamic AirStripe sleeves (upper part)
- Water repellent
- Gradual compression (legs)
- Integrated leg grippers
- Durable

# UPGRADES

At Bioracer, customizing cycling apparel goes beyond just choosing the colors, logos, and designs. There are also several upgrades available at a small extra cost, which allow you to better tailor the clothing to your needs.

## REFLECTIVE DETAILS

Stand out to be seen! Reflective details on your cycling apparel improve your visibility, ensuring better safety in traffic. This upgrade is only possible in combination with flatlock, as the reflective details are integrated in the seams.



## NUMBER POCKET

Anyone who competes in races knows the hassle of back numbers. Thanks to the number pocket, this belongs to the past. No more pins, just put your number in the transparent pocket and you are all set.



## ZIPPED BACK POCKET

One can never have too much storage space! Add a zipped back pocket for your keys or other valuables to your jersey or jacket. The additional pocket will be added on top of the right open back pocket, with a vertically placed zipper on the right side.



## TRANSMITTER POCKET

Nowadays, transmitters are used in almost all races. It is therefore practical that your racing outfit has a pocket to store these. Just for that purpose, you can choose the option 'transmitter pocket'.



## ZIPPED MULTI-COMPARTMENT BACK POCKET

Those who like closed pockets can replace two of the open back pockets on the Tempest (Full) Protect Jacket with one zipped, two-compartment pocket. This way, you can safely store all your valuables.



# UPGRADES

At Bioracer, customizing cycling apparel goes beyond just choosing the colors, logos, and designs. There are also several options, available at a small extra cost, which allow you to better tailor the clothing to your needs.

	JERSEYS				JACKETS				GILETS		BIBSHORTS/TIGHTS			AEROSUITS							
	Epic Jersey	Epic Breeze Jersey	Epic Coldblack jersey	Epic Tokyo GR+ Jersey	Epic Tempest Light Jacket	Epic Tempest Jacket	Epic Tempest Protect Jacket	Epic Rain Jacket	Epic Wind Gilet	Epic Tempest Protect Gilet	All Bibshorts	All Shorts	Epic Tempest Bibtights	Epic Road Race Aerosuit	Epic Breeze Road Race Aerosuit	Epic Tokyo GR+ Road Race Aerosuit	Epic Time Trial Aerosuit	Epic Time Trial Long Sleeve Aerosuit			All Epic Cyclo-Cross Aerosuits
Reflective details	●	●			●	●	●	●	●	●	●	●	●	●	●						●
Zipped back pocket (Additional pocket)	●	●	●	●	●	●															
Zipped multi compartment back pocket							●														
Number pocket																	●	●			●
Transmitter pocket														●	●	●	●	●			●





# ICON

## *INCLUSIVE COMFORT AND PERFORMANCE*

The Icon line provides ultimate comfort while keeping performance in mind. Whether you go for a relaxed ride or compete in a race, this product range with a classic body fit is an excellent choice. The apparel is available for men, women, and kids; all with a slightly different gender-specific cut.

Inspired by the best-selling and trusted products of the Bioracer legacy, we created a full range of 'classic' cycling apparel featuring the latest technologies. It is based on success, as Van Avermaet and Gilbert, among others, wrote cycling history wearing Bioracer's former Race Proven and Prof lines. You can imagine that with an updated fit and materials, things have been improved even more.

The Icon line is not only developed to perform, but also designed to make your team stand out. The variety of design possibilities allows you to customize your cycling kit with sponsor logos, club or company colors and more. Thanks to the ingenious construction, our newest product line is also reverse compatible with your older Race Proven and Prof designs.

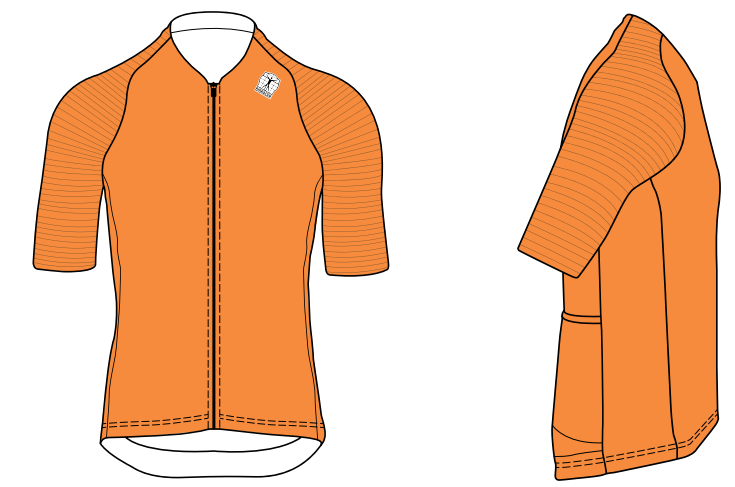
Last but not least: with a reasonable pricing, we want to allow all riders to experience the efficiency, performance, and comfort of Bioracer speedwear.

Ready to discover all the Icon products? Go!



# DESIGN POSSIBILITIES

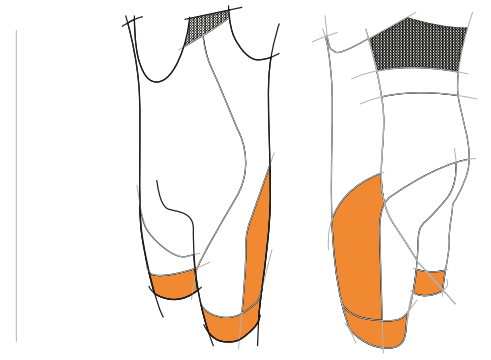
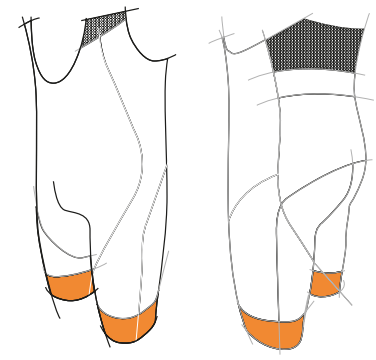
## PRINT OPTIONS JERSEY



## PRINT OPTIONS BIBSHORTS

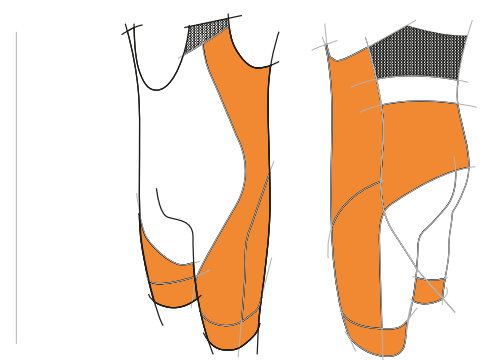
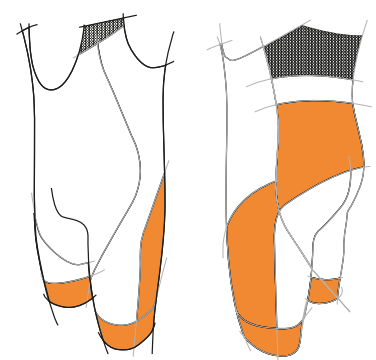
SINGLE

DOUBLE



TRIPLE

FULL



- Customizable area
- Fabric base color: Black / Navy / Safiro / Grey / Red



**KIT:**

# **CYCLING IS NOT A FAIR-WEATHER SPORT**

There is an Icon kit for every weather system. From spring training to fall classics. From hot summer race days to ice-cold winter rides, we've got you covered.

On the next page, you will discover our standard kits with everything you need for your warm, mixed and cold weather rides. Off course, you can also mix and match the Icon items to assemble your own kit.



## **WARM WEATHER SYSTEM**

41358 Icon Jersey  
52147 Icon Bibshorts

50024 Technical Summer Cap  
59098 One Summer Gloves  
59080 Technical Socks



## **MIXED WEATHER SYSTEM**

51471 Icon Tempest Light Jacket  
51972 Icon High Collar Wind Gilet  
52147 Icon Bibshorts

50020 Mid-Season Cap  
59191 Stratos Long Finger Gloves  
59350 Technical Mid-Season Arm Warmers  
59401 Lycra Mid-Season Leg warmers  
59097 Classic Socks  
59709 Tempest Protect Mid Season  
Shoe Covers



## **COLD WEATHER SYSTEM**

51560 Icon Tempest Protect Jacket  
53532 Icon Tempest Bibtights

83397 Tempest Winter Hat  
59610 Winter Bandido  
59093 Tempest Protect Winter Gloves  
59066 Tempest Winter Socks  
59710 Tempest Full Protect Winter  
Shoe Covers



## ***SIZING: THE MEASURE OF GREAT PERFORMANCE***

A perfect fit is critical to comfort and performance for every type of rider. Bioracer offers an extensive range of sizes across our product lines to ensure that all our cycling apparel delivers the best possible rider experience.

Whether supplying the next champion or outfitting a fundraising event, our attention to anatomic differences makes the difference in performance and comfort, on and off the bike.

Therefore, our Icon bibshorts and aerosuits are available in a Standard and a Tall version\* to ensure an ideal fit for every rider's body type.



# WARM WEATHER

Cycling apparel engineered to keep you cool and comfortable during all your summer rides. The ideal companion for warm and hot weather conditions.



## ICON JERSEY

- ♂ 41358
- ♀ 41358W
- ☺ 41358K

- Low collar
- Perforated side panels
- Clean-cut sleeves
- Elastic waistband with silicone gripper
- 3 open back pockets

## ICON BLUE OCEAN JERSEY

- ♂ 41360
- ♀ 41360W
- ☺ 41360K

- + Recycled fabric: more info on p.151



## ICON SLEEVELESS JERSEY

- ♂ 51201
- ♀ 51201W

- Low collar
- Mesh back panel
- Perforated side panels
- Elastic waistband with silicone gripper
- 3 open back pockets



## ICON BREEZE JERSEY

- ♂ 41359
- ♀ 41359W

- Low collar
- Mesh fabric
- Clean-cut sleeves
- Elastic waistband with silicone gripper
- 3 open back pockets



## ICON WOMEN'S TAN TOP

- ♀ 51240W

- Silicone gripper straps
- Perforated side and back panels
- Elastic waistband with silicone gripper
- 2 open back pockets
- Racerback

# WARM WEATHER

Cycling apparel engineered to keep you cool and comfortable during all your summer rides. The ideal companion for warm and hot weather conditions.



## ICON SHORTS

- ♂ 51824
- ♀ 51824W
- ☺ 51824K

- Lycra fabric
- Elastic waistband
- Powerband leg grippers
- Vapor pad recommended



## ICON BIBSHORTS

- ♂ 52147
- ♀ 52147W
- ☺ 52147K

- Lycra fabric
- Mesh bibs
- Powerband leg grippers
- Vapor pad recommended

# MIXED WEATHER

Versatile cycling apparel engineered to keep you comfortable during all for all your mid-season rides. The ideal companion for uncertain or cool weather conditions.



## ICON WIND GILET

♂ 51971  
♀ 51971W

- Wind-blocking front panel
- Mesh back panel
- Elastic waistband with silicone gripper
- Packable
- 3 back openings  
(to access your back pockets)



## ICON TEMPEST LIGHT JACKET

♂ 51471  
♀ 51471W  
☺ 51471K

- Insulating
- Durable water repellent
- Elastic waistband with silicone gripper
- Soft cuffs
- 3 open back pockets

## ICON TEMPEST LIGHT WIND JACKET

♂ 51473  
♀ 51473W  
☺ 51473K

- + Wind-blocking front panel



## ICON HIGH COLLAR WIND GILET

♂ 51972  
♀ 51972W  
☺ 51972K

- Wind-blocking front panel
- Mesh back panel
- Elastic waistband with silicone gripper
- Packable
- 3 open back pockets



## ICON RAIN JACKET

♂ 51562  
♀ 51562W

- Durable water repellent
- Wind blocking
- Elastic waistband with silicone gripper
- High collar
- Storage pouch inside

# COLD WEATHER

Cycling apparel engineered to brave the cold, wind and rain. Developed without compromise. The ideal companion for all your cold and wet rides.



## ICON TEMPEST JACKET

- ♂ 51472
- ♀ 51472W
- ☺ 51472K

- Insulating
- Durable water repellent
- Elastic waistband with silicone gripper
- Soft cuffs
- 3 open back pockets

## ICON TEMPEST PROTECT JACKET

- ♂ 51560
- ♀ 51560W
- ☺ 51560K

- Wind-blocking front panel
- Insulating
- Durable water repellent
- Elastic waistband with silicone gripper
- 3 open back pockets



## ICON TEMPEST PROTECT GILET

- ♂ 51973
- ♀ 51973W
- ☺ 51973K

- Wind-blocking front panel
- Insulating
- Durable water repellent
- Elastic waistband with silicone gripper
- 3 open back pockets

# COLD WEATHER

Cycling apparel engineered to brave the cold, wind and rain. Developed without compromise. The ideal companion for all your cold and wet rides.



## ICON TEMPEST WOMEN'S TIGHTS

♀ 54332W

- Insulating
- Durable water repellent
- Elastic waistband
- Thin foot straps
- Vapor pad recommended



## ICON TEMPEST BIBTIGHTS

♂ 53532  
♀ 53532W  
☺ 53532K

- Insulating
- Durable water repellent
- Thermo bibs
- Thin foot straps
- Vapor pad recommended



# RACE DAY

## FLY OUT OF THE TRAPS

Race day is finally here. Time to put all your tactics into practice. You have trained well and got the condition you have strived for. After all that effort, it is logical to leave nothing to chance.

Whichever weather it is, it is important to keep your body temperature under control. By wearing the appropriate race clothing, you can save your energy for essential breakaways or sprints.

This sounds like the ideal job for our performance-driven race gear, developed to perform in the most demanding conditions.

Off you go! Ride like it is race day!



# RACE DAY (SUITS)

The ultimate combination of performance and comfort.  
The ideal companion for races.



## ICON ROAD RACE AEROSUIT

- ♂ 56591
- ♀ 56591W
- ☺ 56591K

- Aerodynamic AirStripe sleeves
- Perforated side panels
- Powerband leg grippers
- 2 open back pockets
- Two-piece front (only attached at the back)



## ICON TIME TRIAL AEROSUIT

- ♂ 56593
- ♀ 56593W

- Aerodynamic AirStripe sleeves
- Short clean-cut sleeves
- Powerband leg grippers



## ICON BREEZE ROAD RACE AEROSUIT

- ♂ 56590
- ♀ 56590W

- Aerodynamic AirStripe sleeves
- Mesh fabric (upper part)
- Powerband leg grippers
- 2 open back pockets
- Two-piece front (only attached at the back)



## ICON TIME TRIAL LONG SLEEVE AEROSUIT

- ♂ 56693
- ♀ 56693W

- Aerodynamic AirStripe sleeves
- Long sleeves
- Powerband leg grippers



# CYCLO-CROSS

## TALK DIRTY TO ME

Mud, sand, dust. Hills, steps, and barriers. Full focus, utmost concentration. Searing lungs, frozen toes, and sore legs. 60 minutes of suffering for one second of glory.

Success you can only achieve by riding the technical sections perfectly, putting your race tactics flawlessly into practice and picking the appropriate race clothing.

Our performance-driven cyclo-cross aerosuits have been developed to perform in the most demanding conditions.

# CYCLO-CROSS

Cycling apparel engineered to battle the mud, grit, sand, dust, hills, steps and barriers. The ideal companion for cyclo-cross.



## ICON CYCLO-CROSS AEROSUIT

- ♂ 56592
- ♀ 56592W
- ☺ 56592K

- Aerodynamic AirStripe sleeves
- Water repellent
- Powerband leg grippers
- Insulating
- Durable



## ICON CYCLO-CROSS LONG SLEEVE AEROSUIT

- ♂ 56692
- ♀ 56692D
- ☺ 56692K

- Aerodynamic AirStripe sleeves
- Water repellent
- Powerband leg grippers
- Insulating
- Durable

# UPGRADES

At Bioracer, customizing cycling apparel goes beyond just choosing the colors, logos, and designs. There are also several options, available at a small extra cost, which allow you to better tailor the clothing to your needs.

## REFLECTIVE DETAILS

Stand out to be seen! Reflective details on your cycling apparel improve your visibility, ensuring better safety in traffic.



## 2 MESH SIDE POCKETS

One can never have too much storage space! Add extra side pockets in mesh fabric, so you can keep your sports bars close. That way, you can pop them in your mouth if the ride starts to get tough. The side pockets are also ideal for your smartphone if you want to take photos during your ride. This option is only available if you choose the 'compact' design possibility for your bibshorts.



## ZIPPED BACK POCKET

One can never have too much storage space! Add a zipped back pocket for your keys or other valuables to your jersey or jacket. The additional pocket will be added on top of the right open back pocket, with a vertically placed zipper on the right side.



## NUMBER POCKET

Anyone who competes in races knows the hassle of back numbers. Thanks to the number pocket, this belongs to the past. No more pins, just put your number in the transparent pocket and you are all set.



## COVERED ZIPPER

With this option, the zipper in your jersey, gilet, or jacket is almost invisible. This makes the 'split' of your design by the zipper less obvious. Please note that this will make your garment fit a little tighter (+-2cm).



## TRANSMITTER POCKET

Nowadays, transmitters are used in almost all races. It is therefore practical that your racing outfit has a pocket to store these. Just for that purpose, you can choose the option 'transmitter pocket'.



# UPGRADES

At Bioracer, customizing cycling apparel goes beyond just choosing the colors, logos, and designs. There are also several options, available at a small extra cost, which allow you to better tailor the clothing to your needs.

	JERSEYS					JACKETS					GILETS			BIBSHORTS/TIGHTS			AEROSUITS			
	Icon Jersey	Icon Blue Ocean Jersey	Icon Breeze Jersey	Icon Women's Tan Top	Icon Sleeveless Jersey	Icon Tempest Light Jacket	Icon Tempest Light Wind Jacket	Icon Tempest Jacket	Icon Tempest Protect Jacket	Icon Rain Jacket	Icon Wind Gilet	Icon Wind Gilet High Collar	Icon Tempest Protect Gilet	Icon Bibshorts	Icon Shorts	Icon Tempest Bibtights	Icon Tempest Women's Tights	All Icon Road Race Aerosuits	All Icon Time Trial Aerosuits	All Icon Cyclo-Cross Aerosuits
Reflective details	●	●	●	●	●	●	●	●	●	●	●	●	●	●	●	●	●	●		●
Zipped back pocket (Additional pocket)	●	●	●	●	●	●	●	●	●			●	●							
Covered zipper	●	●	●		●	●	●	●	●	●	●	●	●							
2 mesh side pockets														●	●			●		●
Number pocket																			●	●
Transmitter pocket																		●	●	●



WARM WEATHER



51390  
Epic Jersey



41324  
Epic Breeze Jersey



41320  
Epic Coldblack Jersey



52122  
Epic Bibshorts



51832W  
Epic Women's Shorts



MIXED WEATHER



51951  
Epic Wind Gilet



51482  
Epic Tempest Light Jacket



51552  
Epic Rain Jacket



COLD WEATHER



51480  
Epic Tempest Jacket



51551  
Epic Tempest Protect Jacket



51950  
Epic Tempest Protect Gilet



53570  
Epic Tempest Bibtights



RACE DAY



56580  
Epic Road Race Aerosuit



56597  
Epic Breeze Road Race Aerosuit



56470  
Epic Time Trial Aerosuit



56471  
Epic Time Trial Long Sleeve  
Aerosuit



56584  
Epic Tokyo GR+ Road Race  
Aerosuit



52124  
Epic Tokyo GR+ Bibshorts



41321  
Epic Tokyo GR+ Jersey



56587  
Epic Cyclo-Cross  
Aerosuit



56681  
Epic Cyclo-Cross  
Long Sleeve Aerosuit



WARM WEATHER



41358  
Icon Jersey



41360  
Icon Blue Ocean Jersey



41359  
Icon Breeze Jersey



51201  
Icon Sleeveless Jersey



51240W  
Icon Women's Tan Top



51824  
Icon Shorts



52147  
Icon Bibshorts



MIXED WEATHER



51971  
Icon Wind Gilet



51972  
Icon High Collar Wind Gilet



51471  
Icon Tempest Light Jacket



51473  
Icon Tempest Light Wind Jacket



51562  
Icon Rain Jacket



COLD WEATHER



51472  
Icon Tempest Jacket



51560  
Icon Tempest Protect Jacket



51973  
Icon Tempest Protect Gilet



54332W  
Icon Tempest Women's Tights



53532  
Icon Tempest Bibtights



RACE DAY



56591  
Icon Road Race Aerosuit



56590  
Icon Breeze Road Race Aerosuit



56593  
Icon Time Trial Aerosuit



56693  
Icon Time Trial Long Sleeve Aerosuit



56592  
Icon Cyclo-Cross Aerosuit



56692  
Icon Cyclo-Cross Long Sleeve Aerosuit







***CUSTOM ACCESSORIES:***

## ***DOWN TO THE LAST DETAIL***

Accessories make all the difference. They are just as important as your jersey, bibshorts or jacket to battle cold and regulate heat.

On the next pages, you will discover our customizable accessories. Mix and match them to complete your custom kit.

# WARM WEATHER



**TECHNICAL SUMMER CAP**  
50024

- Central mesh band
- Ultralight
- Fast drying
- Helmet friendly
- Flippable flap

Minimum order quantity: 25



**SLEEVELESS BREEZE BASE LAYER**  
59800

- Mesh fabric
- Breathable
- Sweat wicking
- Sleeveless

Minimum order quantity: 10



**ONE SUMMER GLOVES**  
59098

- Extra grip control
- Nubuck palms
- Pull-tab
- Stretch

Minimum order quantity: 25



**SHORT SLEEVE BREEZE BASE LAYER**  
59802

- Mesh fabric
- Breathable
- Sweat wicking
- Short sleeves

Minimum order quantity: 10



**TECHNICAL SOCKS**  
59080

- Technical upper part with gradual compression
- Integrated leg gripper
- Antibacterial Climawell foot
- Fast drying
- Velominati approved length

Minimum order quantity: 10

## MIXED WEATHER



### TECHNICAL MID-SEASON CAP

50020

- Fast drying
- Lightweight
- Helmet friendly
- Flippable flap

Minimum order quantity: 25



### TECHNICAL MID-SEASON ARM WARMERS

59350

- Ultra lightweight
- Silicone gripper
- Easily storable

Minimum order quantity: 10



### MID-SEASON BANDIDO

59614

- Lightweight
- Versatile (8 ways to wear it)
- Multifunctional

Minimum order quantity: 10



### LYCRA MID-SEASON LEG WARMERS

59401

59402 (WITH ZIPPER)

- Lycra fabric
- Lightweight
- Silicone gripper
- Easily storable

Minimum order quantity: 10



### STRATOS LONG FINGER GLOVES

59191

- Light wind protection
- Extra grip control
- Nubuck palms
- Fast drying
- Lightweight

Minimum order quantity: 25

# MIXED WEATHER



## CLASSIC SOCKS

59105

- Breathable
- Antibacterial Climawell
- 4-way stretch
- Tight fit
- Velominati approved length

Minimum order quantity: 100



## TEMPEST PROTECT MID-SEASON SHOE COVERS

59709

- Wind blocking
- Insulating
- Durable water repellent
- Silicone leg gripper
- Zipper

Minimum order quantity: 10



## TOE PROTECTOR

59711

- Insulating
- Windblock
- Water repellent

Minimum order quantity: 10

# COLD WEATHER



**TEMPEST WINTER HAT**  
83397

- Insulating
- Durable water repellent
- Breathable
- Soft lining

Minimum order quantity: 10



**TEMPEST WINTER ARM WARMERS**  
59314

- Insulating
- Durable water repellent
- Silicone gripper
- Soft lining

Minimum order quantity: 10



**TEMPEST WINTER HEADBAND**  
83400

- Insulating
- Durable water repellent
- Soft lining

Minimum order quantity: 10



**TEMPEST WINTER LEG WARMERS**  
59411  
59412 (WITH ZIPPER)

- Insulating
- Durable water repellent
- Silicone gripper
- Soft lining

Minimum order quantity: 10



**WINTER BANDIDO**  
59610

- Polyester upper part
- Fleece lower part
- Multifunctional

Minimum order quantity: 10

# COLD WEATHER



## TEMPEST PROTECT WINTER GLOVES

59093

- Wind blocking
- Insulating
- Durable water repellent
- Soft lining
- Extra grip control

Minimum order quantity: 25



## TEMPEST WINTER SOCKS

59066

- Insulating
- Durable water repellent
- Soft lining
- Tight fit
- Velominati approved length

Minimum order quantity: 10



## TEMPEST FULL PROTECT WINTER SHOE COVERS

59710

- Wind blocking
- Insulating
- Durable water repellent
- Zipper
- Silicone leg gripper

Minimum order quantity: 10

# RACE DAY



## TOKYO GR+ ARM WARMERS

53922

- Body-cooling graphene
- Aerodynamic AirStripe technology
- Silicone mesh arm gripper
- Clean cut

Minimum order quantity: 25



## TEMPEST FULL PROTECT WINTER SOCKS

59068

- Wind blocking
- Insulating
- Durable water repellent
- Soft lining

Minimum order quantity: 10



## AERO ARM WARMERS

59301

- Aerodynamic AirStripe technology
- Silicone grippers
- Clean cut

Minimum order quantity: 10



## AERO SHOE COVERS

59712

- Aerodynamic AirStripe (leg)
- Lycra (foot)
- Tight fit
- Lightweight
- Velcro closure (under foot)

Minimum order quantity: 10



## BREEZE GLOVES

59190

- Mesh outside hand panel
- Extra grip control
- Nubuck palms
- Pull-tab
- Stretch

Minimum order quantity: 10



## ONE SUMMER SHOE COVERS

59708

- Silicone gripper
- Lightweight
- Lycra fabric

Minimum order quantity: 10



*OFF-BIKE:*

## ***LOOKING GOOD OFF THE BIKE HAS NEVER BEEN EASIER***

Team up, on and off the bike.

As stylish as your cycling clothing, our customizable leisurewear is a great choice for your everyday life. Ideal to put on after your ride or race.

Would you also like customized leisurewear to match with your teammates after the ride? Ask your sales representative for our promotional goods catalog.



# ***NON-CUSTOM ACCESSORIES***



***NON-CUSTOM ACCESSORIES:***

## ***PUSH YOUR PEDALS IN STYLE***

Accessories make all the difference. They are just as important as your jersey, bibshorts or jacket to battle the cold and resist the heat.

On the next pages, you will discover our non-customizable accessories. Ideal as a neutral addition to your kit or as an alternative if you do not meet the minimum order quantities.

Mix and match them to complete your kit.

WARM WEATHER



CO\_BR20023  
Technical Summer Cap



CO\_BR11390  
Sleeveless Breeze Base Layer



CO\_BR11380  
Short Sleeve Breeze Base Layer



CO\_BR20079  
Summer Road Gloves



CO\_BR28721  
Off-Road Tech Base Bibshorts



CO\_BR28722  
Off-Road Tech Base Shorts



MIXED WEATHER



CO\_BR59614  
Bandido



CO\_BR29018  
Speedwear Concept Aero Rain Gilet



CO\_BR29017  
Speedwear Concept Aero Rain Jacket



CO\_BR59811  
Sleeveless Mid-season Base Layer



CO\_BR59812  
Short Sleeve Mid-season Base Layer



CO\_BR59813  
Long Sleeve Mid-season Base Layer



CO\_BR20053  
Tempest Pixel Mid-Season Gloves



CO\_BR11594  
Stratos Arm Warmers



CO\_BR11591  
Stratos Leg Warmers



CO\_BR17730  
Neoprene Toe Protector



CO\_BR20115  
Classic Socks



COLD WEATHER



CO\_BR11516  
Tempest Winter Hat



CO\_BR59814  
Merino Winter Base Layer



CO\_BR29046  
Speedwear Concept Kaaiman Rain Jacket



CO\_BR20054  
Tempest Protect Pixel Winter Gloves



CO\_BR11702  
Tempest Winter Arm Warmers



CO\_BR13117  
Tempest Zipper Tights



CO\_BR11703  
Tempest Winter Leg Warmers



CO\_BR20113  
Merino Winter Socks



CO\_BR17840  
Tempest Full Protect Pixel Winter Shoe Covers



CO\_BR29090  
Speedwear Concept Time Trial Gloves



CO\_BR29091  
Speedwear Concept Time Trial Shoe Covers



CO\_BR29085  
Speedwear Concept Aero Shoe Covers



RACE DAY

# ***SIZE GUIDE & PAD SELECTOR***

# SIZE GUIDE

## FIND YOUR SIZE

### FOR CYCLING APPAREL THAT FITS LIKE A GLOVE

Man is the measure of all things. You are the measure of your custom cycling apparel. After selecting your preferred articles and customizing the design, there is one more thing you need to do: determine your size using our size guide. The more accurate, the better the results.



[BIORACER.COM/CATALOG-SIZEGUIDE](http://BIORACER.COM/CATALOG-SIZEGUIDE)



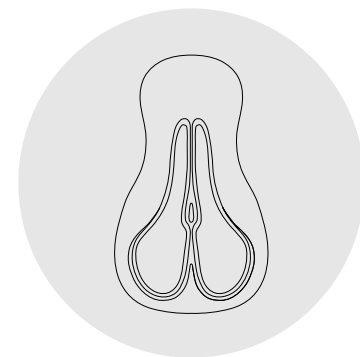
# PAD SELECTOR

We only supply high quality; this also applies to the chamois pads in our (bib)shorts and (bib)tights. Thanks to their multi density foam construction and gender-specific design, they provide optimal support and comfort. All our products come with a certain pad, but you can choose your preferred pad if you want. Use our pad selector to make your choice.

Read more about our pad technology on p.24

MEN			
Cycling pad → Product line ↓	VAPOR SPLIT	VAPOR ONE	WAVE SPLIT
EPIC	○	○	●
ICON	●	○	○

- - Recommended
- - Available as an option

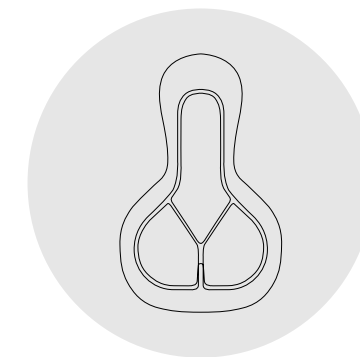


**SPLIT**

The 'split' shape relieves the pressure on soft tissue more effectively thanks to strategically placed cut-outs.

WOMEN		
Cycling pad → Product line ↓	VAPOR ONE	WAVE ONE
EPIC	○	●
ICON	●	○

- - Recommended
- - Available as an option

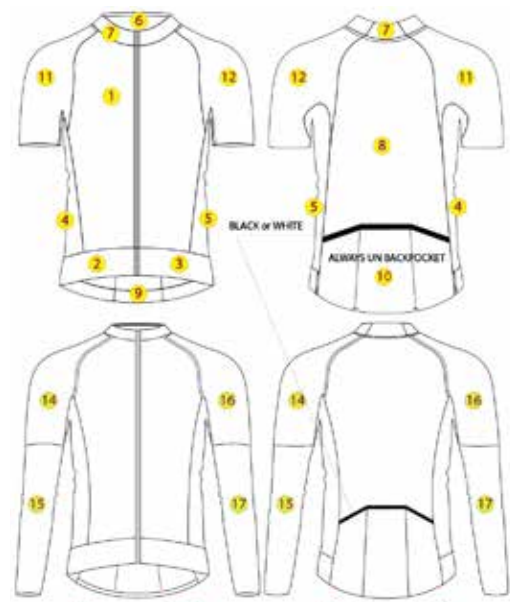


**ONE**

The 'one' shape provides comfortable support everywhere thanks to the full padding.

***DESIGN,  
PRODUCTION  
& ORDER PROCESS***





**EPIC SHIRTS**  
LONG SLEEVES / SHORT SLEEVES



**DESIGN PROCESS:**  
**HUNDREDS OF COLORS.**  
**ALL OF THEM LOOK**  
**GREAT WITH MUD.**

**CREATIVE INPUT**

Your logos, your colors, your design concepts, your dreams.

**CREATIVE MAGIC**

20 experienced designers (artists, racers, skateboarders, muralists) work to bring your vision to life.

**CREATIVE RESULTS**

A highly detailed 3D rendering for you and your teammates to approve. When your design is finalized, we then prepare it for production.

## ***PRODUCTION PROCESS:***

# ***WE COVER EVERY DETAIL FROM START TO FINISH***

At Bioracer, the most experienced hands produce the custom cycling apparel of your dreams, all according to your wishes. From start to finish, from design to delivery, you can always count on the attention and expertise of our team.

### ***PRINTING***

With our advanced digital printers, we print your design onto special paper. This way, we ensure a level of detail, scalability, and print quality worthy of advanced technical clothing.

### ***CUTTING***

Large rolls of fabric end up on the cutting table. The patterns are laid on top and cut out.

### ***SUBLIMATION***

Using heat and pressure, we transfer the design from the paper onto the fabric. The result? A permanent, full color image that will not crack, peel, or wash away. This is because the ink is embedded in the fabric rather than simply laying on top like a normal print.

### ***STITCHING***

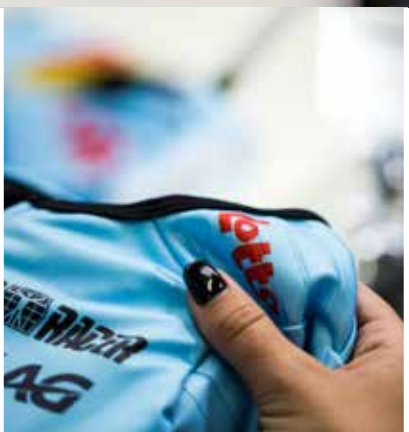
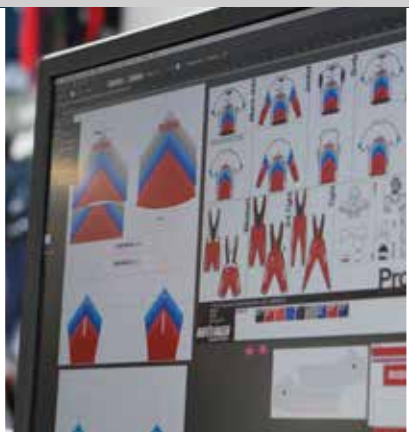
Using exactly the right stitch, thread and technique, our highly skilled seamstresses build quality into every garment. This way, they ensure both comfort and durability.

### ***LOGISTICS***

Your order is packed and shipped. Bioracer is committed to a sustainable business model. We work to continuously improve our efficient make-to-order model from our factories to your doorstep.

### ***CUSTOMER SERVICE***

Do you have any questions? The customer service team will be happy to help you. We want to make sure we earn and maintain your loyalty.





## ORDER PROCESS:

### GET INSPIRED

Interested in custom cycling apparel? Good, the first step has been taken. Get inspired on our website or in our catalog.

### CONNECT

Contact your local sales representative. He will guide you through the order process. You can find all contact details at the end of this catalogue and on our website.

### FREE QUOTE

Select your favorite items with all the options you want and get a free quote.

### DESIGN

Play around with our online design configurator or work out your idea with our inhouse design team. Our 3D tool allows you to review the result and send your feedback directly to your personal designer.

### FITTING

Determine your size using our size charts or ask whether a fitting set is available.

### WEBSHOP

Do you have a large club or company? We create a unique 'My Bioracer Webshop' specific for your company or club to handle all the orders from start to finish. No need to ask around for orders and sizes, everyone places their own order. If you want, you can also set your own prices and award a certain budget to spend.

### ORDER

Check all the details and place your order.

### PRODUCTION

Once confirmed, your order goes into production in one of our own factories. Since we want to provide quality and take good care of our employees, this takes 6 to 8 weeks.

### DELIVERY

The moment you have been looking forward to is finally here. We deliver your custom cycling as agreed. Ride and shine!

\*  BIORACER REPRESENTATIVE  BIORACER DESIGNER  BIORACER CUSTOMER SERVICE

***RESPONSIBLE  
COMPANY***

# RESPONSIBLE COMPANY

Nowadays, we believe that companies have a responsibility for their impact on society. Bioracer is a responsible company creating customer value through the active concern for people, ethics, equity, and environmental impacts while running a profitable business. Simply put, we try to build a sustainable future for our people and our planet. Following the Sustainable Development Goals defined by the United Nations, we commit to their 5 P's:

- PEOPLE** We are determined to create a healthy environment, where our employees can fulfill their potential. We do not want to work “quick and dirty” at the expense of our employees. We want to take our employees with us until they retire. That is why Bioracer engages in poverty reduction and promotes overall health and well-being in the workplace.
- PLANET** We are determined to protect the planet from degradation. That is why Bioracer promotes sustainable consumption and production, manages, and reduces waste, optimizes production processes, creates a sustainable lifestyle, rationally uses energy, and takes actions for biodiversity.
- PEACE** We are determined to foster peaceful, just, and inclusive societies which are free from fear and violence. We create a peaceful environment. At Bioracer, we think it is important to foster sound management, to establish a good dialogue between employer and employee and to communicate our sustainability policy.
- PROSPERITY** We are determined to ensure prosperous and fulfilling lives for all human beings, and that nature is taken into account when striving for economic, social and technological progress. Inequality is one of the defining issues and we want to change that. We make it our mission to ensure diversity and safety at the workplace, and to safeguard the freedom of religion.
- PARTNERSHIP** We are determined to implement sustainable development, based on a strengthened global solidarity. We focus on the needs of everyone and encourage participation among all stakeholders. At Bioracer, we promote risk management to proactively prevent environmental issues and to optimize an evacuation plan. Furthermore, we work together with partners to reduce poverty.

# BLUE OCEAN

**TOGETHER FOR A CLEAN OCEAN.**

Lightness and durability make plastic a useful and versatile material to manufacturers, but these characteristics also make it a long-term problem for the environment. Of all plastic produced worldwide, 3% is estimated to end up in the ocean. And that is a lot. It has already resulted in a plastic soup in our oceans which is seriously damaging marine life. Time for a big change!

Sustainability is close to our company's heart. Therefore, we offer eco-friendly cycling apparel in addition to our 'regular' range.

Thanks to new technologies, it is nowadays possible to obtain innovative and qualitative fabrics from plastic. Our eco-sustainable polyester is a perfect example of this. Made of plastic bottles, it reduces the amount of waste that ends up in the ocean and requires less energy throughout the production process. We want to fight plastic pollution and move towards a circular economy this way.

Cycle in style, cycle eco-friendly with our Blue Ocean cycling apparel.



# FREQUENTLY ASKED QUESTIONS

## DESIGN

### What are the design possibilities?

The design of a jersey can be fully customized. For (bib)shorts and other products, the design possibilities depend on the product line. You can find the Epic design possibilities on page 36 and the Icon design possibilities on page 76 of this catalog. For more inspiration, please visit Instagram @bioracerprojects.

### In which format must logos be delivered?

Our designers need your logo in vector format. This type of image can be made infinitely large without losing quality. You can deliver your logo as a .pdf, .eps or .ai. Converting a .jpeg to a .pdf makes no sense; it will not become a vector image and will look pixelated at full size.

### Until when will my design be retained?

Your design is in safe hands with us. We store it on our servers and do not remove it unless you explicitly ask. This way, you can easily re-order or update your design.

### Will the Bioracer logo be placed on every garment?

Yes, we are proud of our cycling apparel. That is why we put our black and white logo on every garment. Do not worry, we will make sure it does not stand out too much!

## SIZING

### Can I try on the apparel to determine my size?

Ask your local sales representative if a fitting set is available.

If you cannot get a fitting set, use the size charts to determine your size.

### Where can I find the size charts?

You can find the size charts on our website. Scan the QR code on page 136.

### Are there kids sizes available?

We have cycling apparel for kids in our assortment. The items available for kids are marked with a smiley. The Epic line is for adults only.

## ORDERS AND PRODUCTION

### What is the minimal order quantity?

You can place an order starting from 10 items, accessories and base layers not included. Mix and match as you like!

### Can I order cycling apparel for men and women (within one order)?

Yes, you can! See 'What is the minimal order quantity'.

### When can my order go in production?

After the final approval of the design and the confirmation of the order (sizes), your order can go into production. Please note that we must have all customer information such as billing details and delivery address.

### What is the standard delivery time?

After the final approval of the design and the confirmation of the order (sizes), you should take into account a delivery period of 6 to 8 weeks. Because we want to give our employees their peace of mind, the waiting time may be a little longer during vacation periods.

### Do I have to pay an advance?

Payment terms vary by country. You may have to pay a deposit. You can get more info from your local sales representative.

### Can I place additional orders?

You can reorder the same design at the same price for four years. From an additional order amount of 500 euros excluding VAT, you do not have to pay any start-up costs.

### Where does my Bioracer cycling apparel come from?

The first steps such as research and development are carried out at our headquarters in Belgium. For the design you can rely on your local Bioracer department. The production is done as regionally as possible, which is better for the environment. We have our own factories in Belgium, Macedonia, Romania, Colombia, and Tunisia. This gives us 100% control over the quality and delivery times.

## SERVICE

### Is there a warranty?

At Bioracer, we are committed to delivering quality products. If your garment would be damaged, please contact our customer service. We look at each case individually.

**If you have any other question, please contact us. We are happy to help you!**



STRONGERLAD

FVC

VITESSE FIETSEN

sayv

DOMESTIC  
Hebato  
M/J/N

Den Arend

B100

HUID-PRODUCTEN

TCY  
CLUB

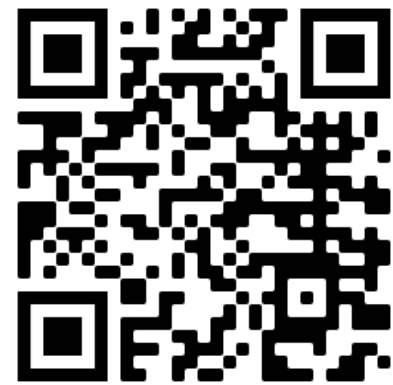
NO LIMITS

deltastar  
ana care

PELLEGRINI DESIGN  
FAMOUS VINYL DE FANTASIE

FAS

*CONTACT US!*



[BIORACER.COM/CATALOG-CONTACT](http://BIORACER.COM/CATALOG-CONTACT)





[WWW.BIORACER.COM](http://WWW.BIORACER.COM) | [INFO@BIORACER.COM](mailto:INFO@BIORACER.COM)